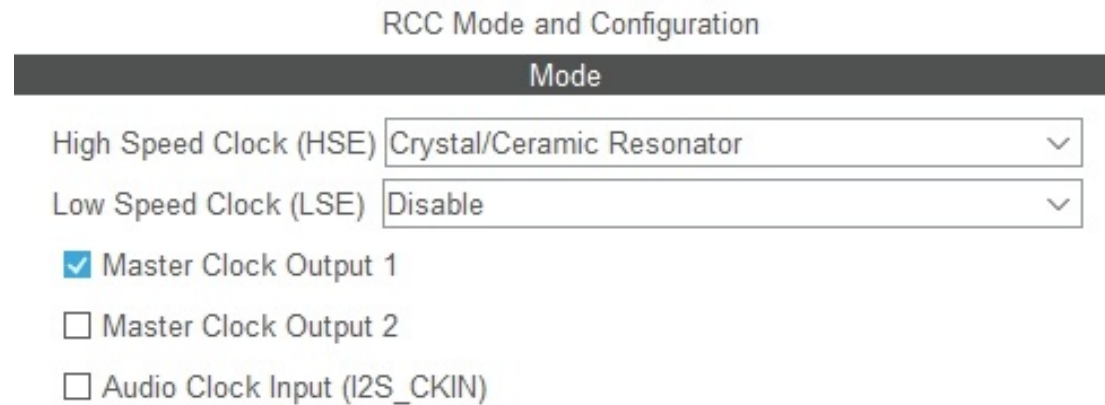


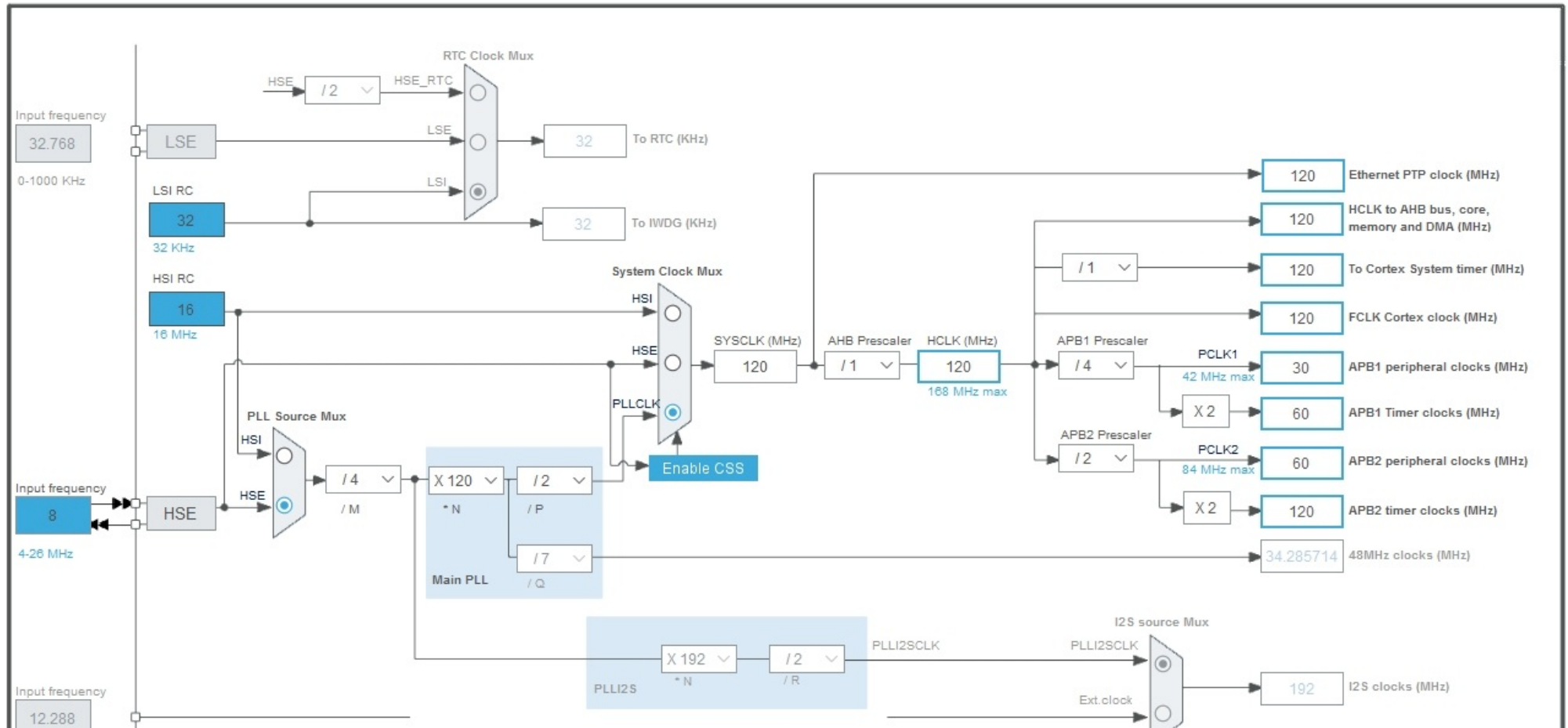
Clock configuration

In CubeMX first select RCC under system core:

Then for HSE select Crystal/Ceramic Resonator. Optionally, select Master Clock Output 1 to allow monitoring an clocking signal



Then under Clock Configuration you get a screen like this:

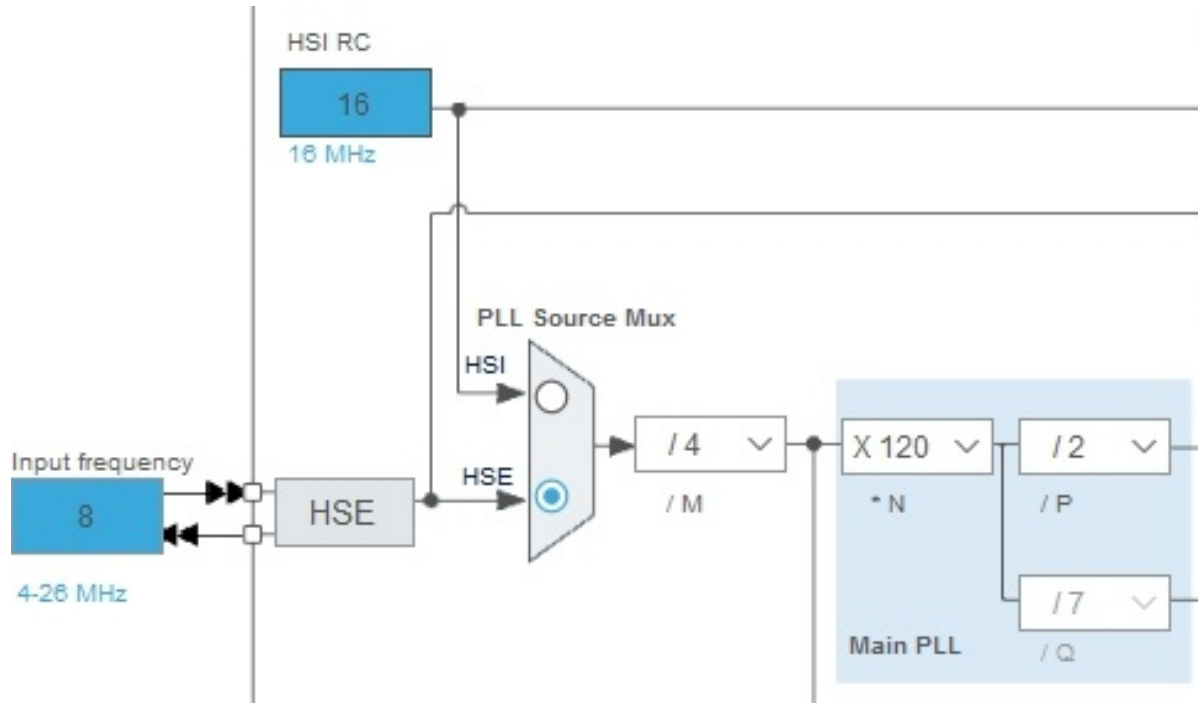


In more detail, the selection of clock source. PLL Source Mux should be set for HSE.

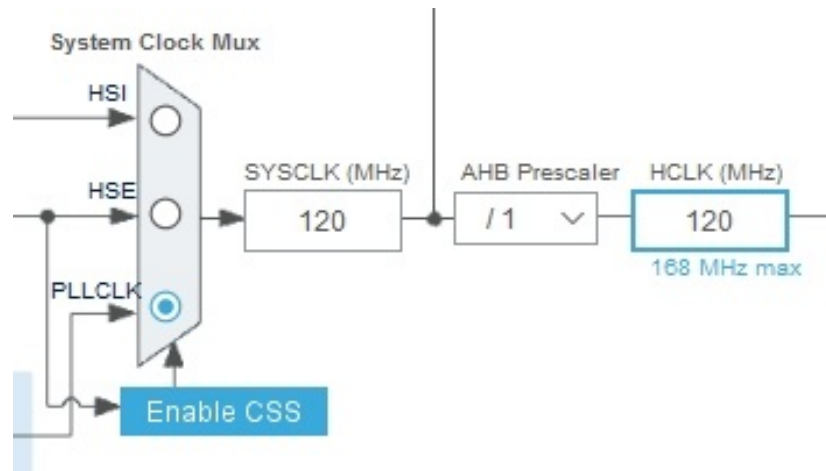
Set the M divider to 4

Set the N multiplier to 120

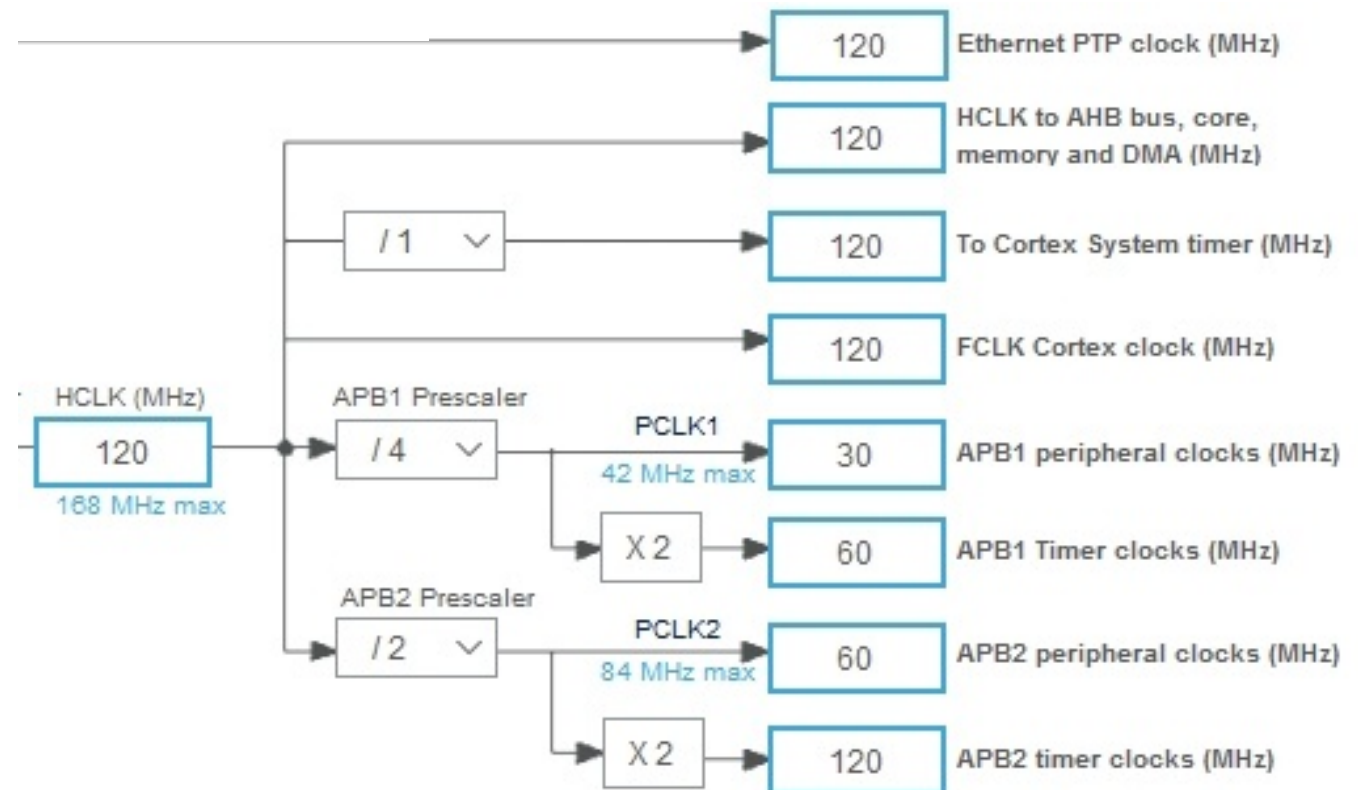
Set the P divider to 2



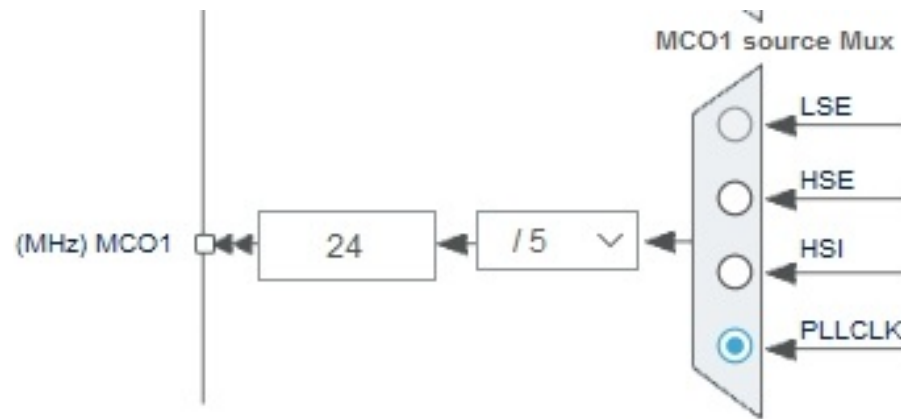
PLLCLK should be selected as system clock source and SYSCLK should show as 120Mhz.



Then the various output clocks:



The optional clock output configuration:



Choose PLLCLK to monitor the system clock rate. You need to divide by 4 or 5 to meet the max frequency of the output pin.